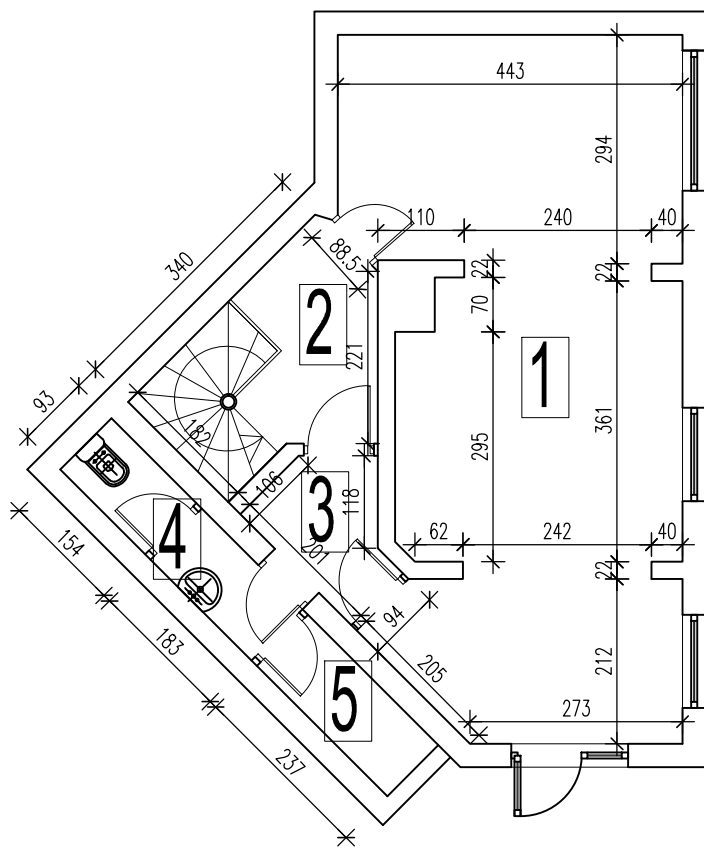


# Lokal - Arčibalda Rajsa br. 9

## OSNOVA PRIZEMLJA



1 -P=34.44m<sup>2</sup>

2 -P=4.30m<sup>2</sup>

3 -P= 2.60m<sup>2</sup>

4 -P= 3.21m<sup>2</sup>

5 -P= 2.20m<sup>2</sup>

6 -P= 50.80m<sup>2</sup>

Ukupna neto površina prizemlja 46.75m<sup>2</sup>

Ukupna neto površina podruma 50.80m<sup>2</sup>

## OSNOVA PODRUMA

