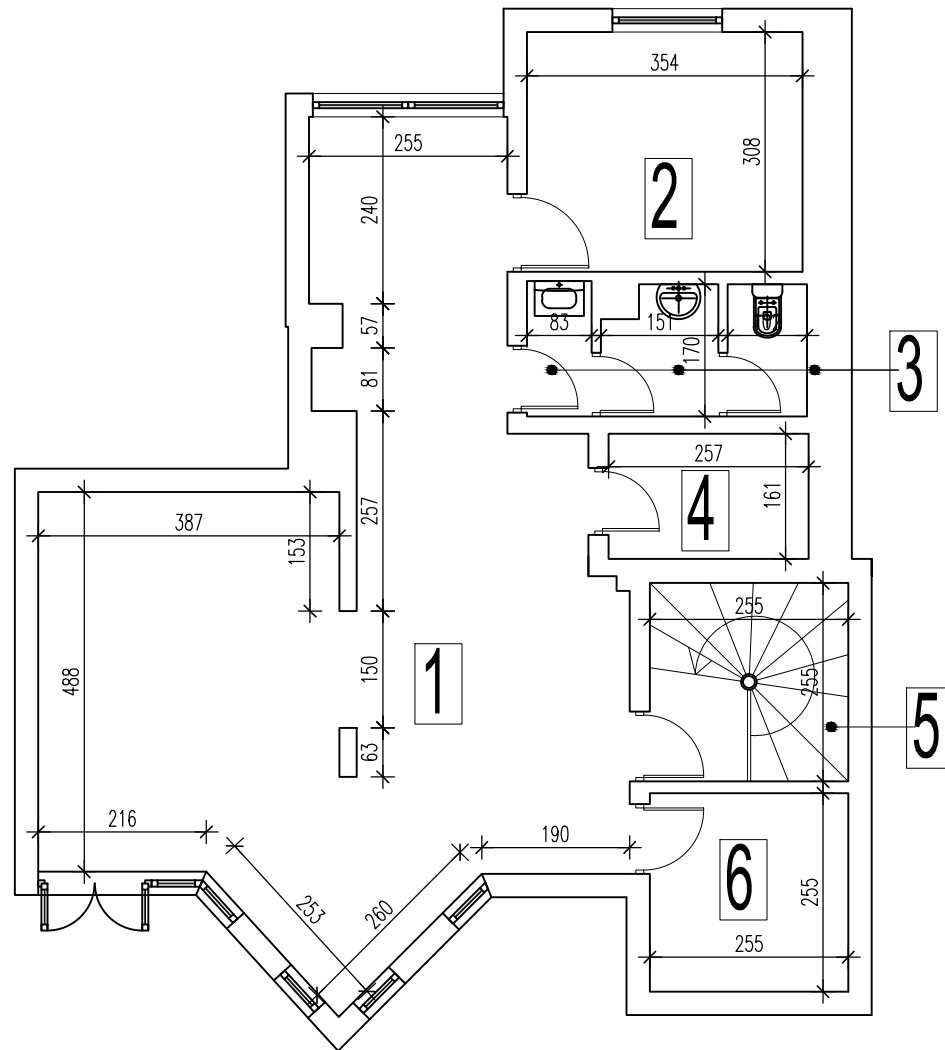


Lokal u Arčibalda Rajsa br. 11

OSNOVA PRIZEMLJA



1 -P=50.50m²

4 -P= 4.13m²

2 -P=10.90m²

5 -P= 6.50m²

3 -P= 5.47m²

6 -P= 6.50m²

Ukupna neto površina prizemlja 77.55m²